

PERFORMANCE

Display Size

27"

View Area

596.74x335.66 mm

Panel

In-Plane Switching

Aspect Ratio

16:9

Resolution

2560x1440

Pixel Pitch

0.2331x0.2331 mm

Dot / Pixel Per Inch

109 dpi

View Angle (H / V)

178 / 178

Response Time

4 ms (Extreme mode) / 6 ms (Typical mode) / 14 ms (Off mode)

Color Support

16.7 Million

Refresh Rate

60 Hz

Brightness

350 nits

Contrast Ratio

1000:1

Color Gamut

99% sRGB

Anti-glare

Yes

Curvature

None

Camera

None

Microphone

None

Speakers

None

Power Consumption (Typical / Maximum)

23W / 122W

Power Adapter

Integrated

Touchscreen

None

Smart System

None

DESIGN

Stand

Tilt, Swivel, Pivot, Height Adjust Stand

Case Color

Raven Black

Side Bezel Width

2 mm

Dimensions with Stand (HxWxD)

564.4x208x614 mm / 22.22x8.19x24.17 inches

Weight (Including Stand)

7.6 kg / 16.76 lbs.

Mounting

Supports VESA mount 100mm

ThinkCentre® M Series Support

None

CONNECTIVITY

USB Port

4x USB 3.1 Gen 1 (1x BC 1.2)

Video Connector

1x HDMI® 1.4, 1x DP 1.2, 1x USB-C® 3.1 Gen 1 (DP 1.2 Alt Mode)

Network Connectivity

None

SERVICE

Base Warranty

3-year

CERTIFICATIONS

Environmental Certification

ENERGY STAR® Certified, TCO 8.0, TCO Edge 2.0, EPEAT™ Silver, RoHS

Ergonomic Certification

Eyesafe® Display, TÜV Low Blue Light (Hardware solution), TÜV Rheinland® Eye Comfort

Sync Technology

None

SOFTWARE

Operating System

Support Windows® 7, Windows 10

ACCESSORIES

Video Cables

USB Type-C® to Type-C cable

MODEL

Announce Date : 2020-10-30
EAN / UPC : 0195348053068 / 195348053068 / None
JAN



Premium Care - Advanced Support from Real People. Real Fast.



REAL PERSON

Choose how you want to reach us - through the phone, chat or email - our expert technicians will take care of you.



REAL FAST

Highly trained technicians will provide you real-time solutions, whatever the issue, on your first contact. If needed, our team will schedule an onsite visit for the next business day.



HASSLE FREE

'Getting started' and 'how-to' assistance for hardware and software. Easy solutions that are simple to reach - that's how Premium Care delivers you the ideal support experience.



PC HEALTH CHECK

Free annual PC Health Check that allows our experts to spot issues before you do so they can resolve them quickly and help you avoid PC problems.

Accidental Damage Protection - Protection of your PC from the unexpected.

Experience shows that a significant portion of devices may be damaged (and not covered under warranty) in the first three years. Lenovo's Accidental Damage Protection service covers accidents beyond the system warranty such as drops, spills, bumps and even electrical surges. Make sure your new device has maximum protection, avoid unplanned costs and get peace of mind.

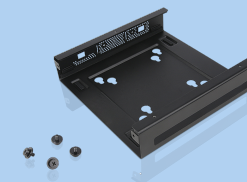
Base Warranty – Included with the systems you purchase, default 1- or 3-year coverage window.

Warranty Extensions & Upgrades – Service and protection that's right for your circumstances.

- Pick Up & Return Courier
- Onsite Support
- Technician Installed Customer
- Replaceable Unit Service
- International Warranty Upgrade

Lenovo may not offer the products, services or features discussed in this document in all regions. Lenovo may withdraw an offering at any time. Consult your local representative for information on offerings available in your area. Lenovo reserves the right to change specifications or other product information without notice. Lenovo is not responsible for photographic or typographical errors. Lenovo provides this publication "as is" without warranty of any kind, either express or implied, including the implied warranties of merchantability or fitness for a particular purpose.

Recommended Accessories



ThinkCentre Tiny VESA Mount II

4XFON03161

The ThinkCentre Tiny VESA Mount II is a unique design specific to house the Tiny PC while featuring the universal VESA mount configuration. The VESA standard enables this mount to attach to anything that is VESA comp...



Kensington MicroSaver 2.0 Cable Lock from Lenovo

4XEON80914

Protect your device. Lenovo offers the latest standard in device security - the MicroSaver 2.0 Cable Lock From Lenovo. Engineered to be the smallest, strongest lock for laptops and other devices, the MicroSaver 2.0 re...

For a full list of accessories and services, please visit:
<https://smartfind.Lenovo.com>

Lenovo

PSREF
Product Specifications
Reference