



# Business continuity made easy

## Schneider Electric Easy UPS 3 Series

**Easy UPS 3S:**  
220/230/240/380/400/415V

**Easy UPS 3M:**  
380/400/415V



# Business continuity made easy

The Schneider Electric Easy UPS 3 Series is an easy to install, connect, use, and service 10-200 kVA 3-phase UPS ideal for small and medium businesses, data centers, and other mission-critical applications.

Easy UPS 3 Series uninterruptible power supplies deliver competitive specifications and robust electrical design in an easy-to-use package. It is exceptionally easy to install, connect, operate, maintain, and service, making it ideal for a wide range of small and medium business applications. This EcoStruxure™ connected UPS features a wide operating temperature range and strong overload protection, all in a compact and lightweight footprint. Start-up service\* optimizes your system's performance, quality, and safety. The Easy UPS 3 Series is the easy choice for your business continuity in the data center or electrical room.

## The Easy UPS 3 Series

### Easy UPS 3S

- 10-40 kVA UPS with internal batteries
- 10-40 kVA UPS for external batteries

### Easy UPS 3M

- 60-80 kVA UPS with internal batteries
- 60-200 kVA UPS for external batteries

### Easy to install and start up

- Rolls into position quickly and easily
- Minimal footprint requirement with lightweight, compact form factor
- Straightforward installation
- Input, output, and bypass breakers are included
- Emergency Power Off (EPO) switch is included
- Easy Loop test verifies UPS performance before you connect your load, without the need for a load bank
- Aesthetic design blends well into your installation environment
- On-site start-up\*\* with Schneider Electric Field Service Representatives

\*\*Included with Easy UPS 3M; recommended service option for Easy UPS 3S



100 kVA Easy UPS 3M  
for external batteries

40 kVA Easy UPS 3S UPS  
with internal batteries

### Typical applications

- Small and medium data centers and computer rooms
- Manufacturing facilities
- Telecommunication
- Commercial buildings
- Healthcare
- Transportation

## Easy to use, connect, monitor, and manage

- User-friendly display interface supports easy configuration
- The optional network card enables:
  - Monitoring of UPS status remotely through a Web interface
  - Monitoring and management of the UPS status and performance through EcoStruxure IT's cloud-based and on-premise software suites, bringing you peace of mind

## Versatile

Easy UPS 3 Series is easy to adapt for your site requirements:

- Only pay for the options you need, with upgrade kits that enhance the resilience of the UPS
- Internal, external, and third-party battery options
- Galaxy Lithium-ion Battery Cabinets for Easy UPS 3M for external batteries
- Common battery bank: Redundant UPSs can share the same battery bank, reducing battery costs
- Extended runtime:
  - Easy UPS 3S UPSs with internal batteries include up to 93 minutes of runtime (Easy UPS 3S 10 kVA with 3 modular high capacity battery strings)
  - Easy UPS 3M UPSs with internal batteries include up to 24 minutes of runtime (Easy UPS 3M 60 kVA at PF=0.8, 70% load)

## Easy to expand

- Parallel UPSs for capacity or redundancy:
  - Easy UPS 3S: Up to four UPSs
  - Easy UPS 3M: Up to six UPSs

## Easy to maintain

- Front and rear access for service
- Quickly and easily replace the dust filter conveniently located behind the front door
- Schneider Electric service team available to make service easy and improve uptime with proper maintenance of your UPS and batteries

## Robust and competitive

- Easy UPS 3 Series brings predictability to utility costs, with up to 96% efficiency in double conversion mode and up to 99% efficiency in ECO mode
- Minimize your power losses and cooling requirements with up to unity power factor (kW=kVA)
- Protect your data center or electrical room with these fortifying features:
  - Embedded dust filter
  - Conformal coating
  - Operating temperature up to 40°C
  - Wide input voltage range

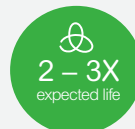
## Lithium-ion batteries

### Save space and the environment

As a first mover with a vast installed base, Schneider Electric has developed our own Galaxy Lithium-ion battery solution that pairs with Easy UPS 3M to deliver these benefits:

- Optimize TCO and achieve sustainability targets by
- **doubling** your battery life
- Simplify and speed up installation with our internal power supply
- Enhance battery safety with three levels of battery management system (BMS)

### Lithium-ion compared to VRLA batteries



## Easy UPS 3S



	Easy UPS 3S for external batteries		Easy UPS 3S with internal batteries	
<b>UPS rating</b>	10-15 kVA	20-40 kVA	10-20kVA	30-40kVA
<b>Dimensions (HxWxD)</b>	530 x 250 x 700 mm	770 x 250 x 800 mm	1400 x 380 x 928 mm	1400 x 500 x 928 mm
<b>Batteries</b>	VRLA: external classic battery cabinet		VRLA: internal modular battery strings	
<b>IP level</b>	IP20			
<b>Special features</b>	10-30 kVA: 3:3 or 3:1-phase UPS available 40 kVA: 3:3-phase UPS available			

## Easy UPS 3M



	Easy UPS 3M for external batteries			Easy UPS 3M with internal batteries
<b>UPS rating</b>	60-100 kVA	120-160 kVA	200 kVA	60-80 kVA
<b>Dimensions (HxWxD)</b>	915 x 360 x 850 mm	1300 x 500 x 850 mm	1300 x 600 x 850 mm	1970 x 600 x 928 mm
<b>Batteries</b>	VRLA: external classic battery cabinet Li-ion: Galaxy Lithium-ion Battery Cabinet			VRLA: internal modular battery strings
<b>IP level</b>	IP20 (IP30 with optional kit)			

## Options and accessories



Empty battery cabinet for battery installation on-site



Modular battery cabinet for extended runtime requirements (compatible with Easy UPS 3S and Easy UPS 3M 60-80 kVA with internal batteries)



Classic battery cabinet with factory installed long-life batteries, for quick and easy installation on-site (available for Easy UPS 3M)



Galaxy Lithium-ion Battery Cabinet (available for Easy UPS 3M)

- Network card
- Modular high-capacity battery string
- Temperature sensor
- Dust filter kit
- Parallel kit
- Parallel or unitary maintenance bypass panels
- Battery breaker box
- Battery breaker kit
- Backfeed boxes
- Empty auxiliary cabinet
- Cable kit for adjacent installation of classic battery cabinet (available for Easy UPS 3M)
- Start-up service (included with Easy UPS 3M; recommended service option for Easy UPS 3S)

# Easy Monitoring, Management, and Services

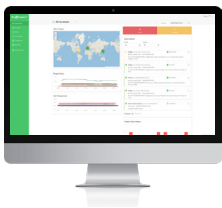
EcoStruxure IT enables resilient, secure, and sustainable data centers and IT environments

**Schneider Electric's comprehensive Data Center Infrastructure Management (DCIM) solution, EcoStruxure IT,** ensures business continuity by enabling secure monitoring, management, insights, planning, and modeling - whether from a single IT rack to hyper-scale IT – on-premises, in the cloud, and at the edge.

When you purchase the network card, you can deploy EcoStruxure IT software and services to enhance monitoring and management of your Easy UPS 3S or 3M.

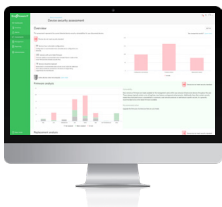
## Easy visibility

Monitoring and management software that streamlines data center device management:



**EcoStruxure IT Expert** provides you a hands-on approach with **cloud-based** monitoring software that synthesizes and analyzes performance and alert data into proactive recommendations and enables wherever-you-go visibility from any device.

Try it now: [www.ecostruxureit.com/ecostruxure-it-expert/#trial](http://www.ecostruxureit.com/ecostruxure-it-expert/#trial)



**EcoStruxure Data Center Expert** is a scalable end-to-end **on-premise** monitoring software that collects, organizes, and distributes critical device information, providing a comprehensive view of your company-wide multi-vendor physical infrastructure.

## 24/7 peace of mind

Digital services proactively monitor your critical devices:

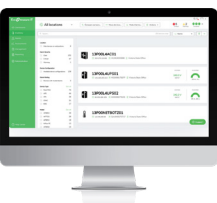


**EcoStruxure Asset Advisor\*** for secure power and cooling provides you a hands-off approach with 24/7 remote monitoring service by the Schneider Electric Connected Services Hub experts.

We monitor and troubleshoot, you relax.

## Operations, optimized

Planning and modeling software transforms data into performance insights:



**EcoStruxure IT Advisor** is a data center infrastructure planning and modeling solution that provides Data Center Managers in large enterprises and colocation data centers with full insights into their infrastructure to improve profitability, sustainability, and resiliency.



Resilient



Secure



Sustainable

## Comprehensive on-site services

### Start-up service\*

- Commission the installation in accordance with manufacturer's recommendations. Ensure optimal system performance from Day 1.

### Schneider Electric-certified installation services

- Expert configuration of your equipment for optimal performance and reliability.

### Maintenance services

- Ensure proper care of your mission-critical applications.
- Preventive maintenance and response time upgrades, where available.

### Flexible service plans / on-site extended warranty

- Hassle-free system maintenance.
- Improve uptime at a predictable cost.

\*Included with Easy UPS 3M; recommended service option for Easy UPS 3S

## Easy UPS 3S technical specifications

Rated Power (kVA/kW)					
Easy UPS 3:1	10/10	15/15	20/20	30/30	
Easy UPS 3:3	10/10	15/15	20/20	30/30	40/40
Normal AC supply input					
Input voltage (V)	380/400/415 V (3-phase + Neutral)				
Frequency (Hz)	45 – 65 Hz				
Input power factor	>0.99				
THDI	<3% for 10 kVA UPS, <4% for 15-40 kVA UPS				
Input voltage range	304 to 477 V at full load				
Dual mains input	Yes (default: single mains input)				
Output					
Nominal output voltage (V)	3:1 – 220/230/240 V				
	3:3 – 380/400/415 V				
Efficiency: Double conversion mode	Up to 96%				
Efficiency: ECO mode	Up to 99%				
Overload capacity in normal operation	130% for 10 minutes and 130-150% for one minute				
Output voltage tolerance	+/-1%				
Communication and management					
Communication interface	RS232, RS485, USB, dry contact, Modbus TCP/IP, optional network card				
Control panel	Multi-function LCD, status and display console				
Weights and dimensions					
UPS for external batteries, unpackaged/ shipping dimensions (H x W x D, mm)	530 x 250 x 700 mm/ 772 x 400 x 857 mm	530 x 250 x 700 mm/ 772 x 400 x 857 mm	770 x 250 x 800 mm/ 1015 x 400 x 982 mm	770 x 250 x 800 mm/ 1015 x 400 x 982 mm	770 x 250 x 900 mm/ 1015 x 400 x 1050 mm
UPS for internal batteries, without batteries, unpackaged, shipping dimensions (H x W x D, mm)	1400 x 380 x 928 mm/ 1640 x 563 x 1014 mm	1400 x 380 x 928 mm/ 1640 x 563 x 1014 mm	1400 x 380 x 928 mm/ 1640 x 563 x 1014 mm	1400 x 500 x 969 mm/ 1640 x 683 x 1114 mm	1400 x 500 x 969 mm/ 1640 x 683 x 1114 mm
UPS for external batteries, unpackaged/shipping weight (kg)	36/50	36/50	58/75	60/77	70/86
UPS for internal batteries, without batteries, unpackaged/shipping weight (kg)	112/145	112/145	122/158	152/190	158/195
Battery string (1 string/4 modules), unpackaged/shipping weight (kg)	27 kg per module/28 kg per module				
Regulatory					
Safety	IEC/EN62040-1-1		Performance	IEC 62040-3	
EMC/EMI/RFI	IEC 62040-2		Environmental	IEC 62040-4	
Markings	CE,RCM, EAC, WEEE				
Battery type					
Battery type	VRLA				
Nominal DC bus (100% load)	+/-192 to +/-240				
Charging power in % of output power (selectable)	1-20%				
Environmental					
Operating temperature	0°C to 40°C				
Relative humidity	0 to 95% non-condensing				
Operating elevation	0 to 1,000 m at 100% load				
Audible noise at 1 m from unit	10-20 kVA: 60 dBA at 100% load; 30-40 kVA: 63 dBA at 100% load				
Protection class	IP20				
Warranty	One year with Schneider Electric-certified Field Service Representative or Certified Service Partner Start-up Service (sold separately)				

\*Under 30°C

## Easy UPS 3M technical specifications

Rated Power (kVA/kW)	60/60	80/80	100/100	120/120	160/160	200/200
<b>Normal AC supply input</b>						
Input voltage (V)	380/400/415 V (3-phase + Neutral + PE)					
Frequency (Hz)	40–70 Hz					
Input power factor	>0.99					
THDI	<3% at full linear load					
Input voltage range	342 to 477 V at full load at 40°C**					
Dual mains input	Yes (default: single mains input)					
<b>Output</b>						
Nominal output voltage (V)	3:3 – 380/400/415 V					
Efficiency: Double conversion mode	Up to 95.5%					
Efficiency: ECO mode	Up to 99%					
Overload capacity in normal operation	125% for 10 minutes, 150% for 1 minute*					
Output voltage tolerance	+/-1%					
<b>Communication and management</b>						
Communication interface	RS485, USB, Dry contact, Modbus TCP/IP (SNMP optional)					
Control panel	Five inch touchscreen LCD, status, and display console					
<b>Weights and dimensions</b>						
UPS for external batteries, unpackaged/ shipping dimensions (H x W x D, mm)	915 x 360 x 850 mm/ 1140 x 475 x 965 mm	915 x 360 x 850 mm/ 1140 x 475 x 965 mm	915 x 360 x 850 mm/ 1140 x 475 x 965 mm	1300 x 500 x 850 mm/ 1500 x 625 x 975 mm	1300 x 500 x 850 mm/ 1500 x 625 x 975 mm	1300 x 600 x 850 mm/ 1500 x 725 x 975 mm
UPS with internal batteries, unpackaged/shipping dimensions (HxWxD, mm)	1970 x 600 x 1000mm/ 2102 x 750 x 1125mm	1970 x 600 x 1000mm/ 2102 x 750 x 1125mm				
UPS for external batteries, unpackaged/shipping, weights (kg)	109/133	140/164	145/169	193/223	227/257	304/338
UPS for internal batteries, without batteries, unpackaged/shipping weight (kg)	311 (360)	339 (387)				
<b>Regulatory</b>						
Safety	IEC/EN 62040-1		Performance		IEC62040-3	
EMC/EMI/RFI	IEC 62040-2		Environmental		IEC 62040-4	
Markings	CE TUV					
<b>Battery type</b>						
Battery type	UPS with internal batteries: VRLA; UPS for external batteries: VRLA or Lithium-ion					
Nominal DC Bus (100% load)	+/-216 to +/-300					
Charging power in % of output power (selectable)	for external batteries: 1-20% with internal batteries: 1-16%	for external batteries: 1-30% with internal batteries: 1-24%	for external batteries: 1-24%	for external batteries: 1-20%	for external batteries: 1-22.5%	for external batteries: 1-24%
<b>Environmental</b>						
Operating temperature	0 to 40°C					
Relative humidity	0 to 95% non-condensing					
Operating elevation	0 to 1,500 m at 100% load					
Audible noise at 1 m from unit	60-100 kVA: 65 dBA at 100% load*; 120-200 kVA: <70 dBA at 100% load*					
Protection class	IP20; IP30 with optional kit					

\*Under 30°C

\*\*342–150 with a linear derating of the load to 30%

Life Is On



To learn more about the Easy UPS 3 Series uninterruptible power supplies and EcoStruxure IT DCIM, contact your Schneider Electric representative or visit [se.com/ups](https://www.se.com/ups)

**About Schneider Electric** At Schneider Electric, we believe access to energy and digital is a basic human right. We empower all to make the most of their energy and resources, ensuring Life Is On everywhere, for everyone, at every moment. We provide energy and automation digital solutions for efficiency and sustainability. We combine world-leading energy technologies, real-time automation, software and services into integrated solutions for Homes, Buildings, Data Centers, Infrastructure and Industries. We are committed to unleash the infinite possibilities of an open, global, innovative community that is passionate about our Meaningful Purpose, Inclusive and Empowered values. [www.se.com](https://www.se.com)

**Schneider Electric SE**

35 rue Joseph Monier  
92500 Rueil Malmaison – France  
[www.schneider-electric.com](https://www.schneider-electric.com)

March 2023

©2023 Schneider Electric. All Rights Reserved. Life Is On Schneider Electric is a trademark and the property of Schneider Electric SE, its subsidiaries and affiliated companies. All other trademarks are the property of their respective owners.

998-20488370\_GMA-US\_B